

APOLLO

Supply chains are back to normal

Torsten Slok, Jyoti Agarwal, and Rajvi Shah
Apollo Global Management

August 2023

Unless otherwise noted, information as of August 2023.

Confidential and Proprietary - Not for distribution, in whole or in part, without the express written consent of Apollo Global Management, Inc.

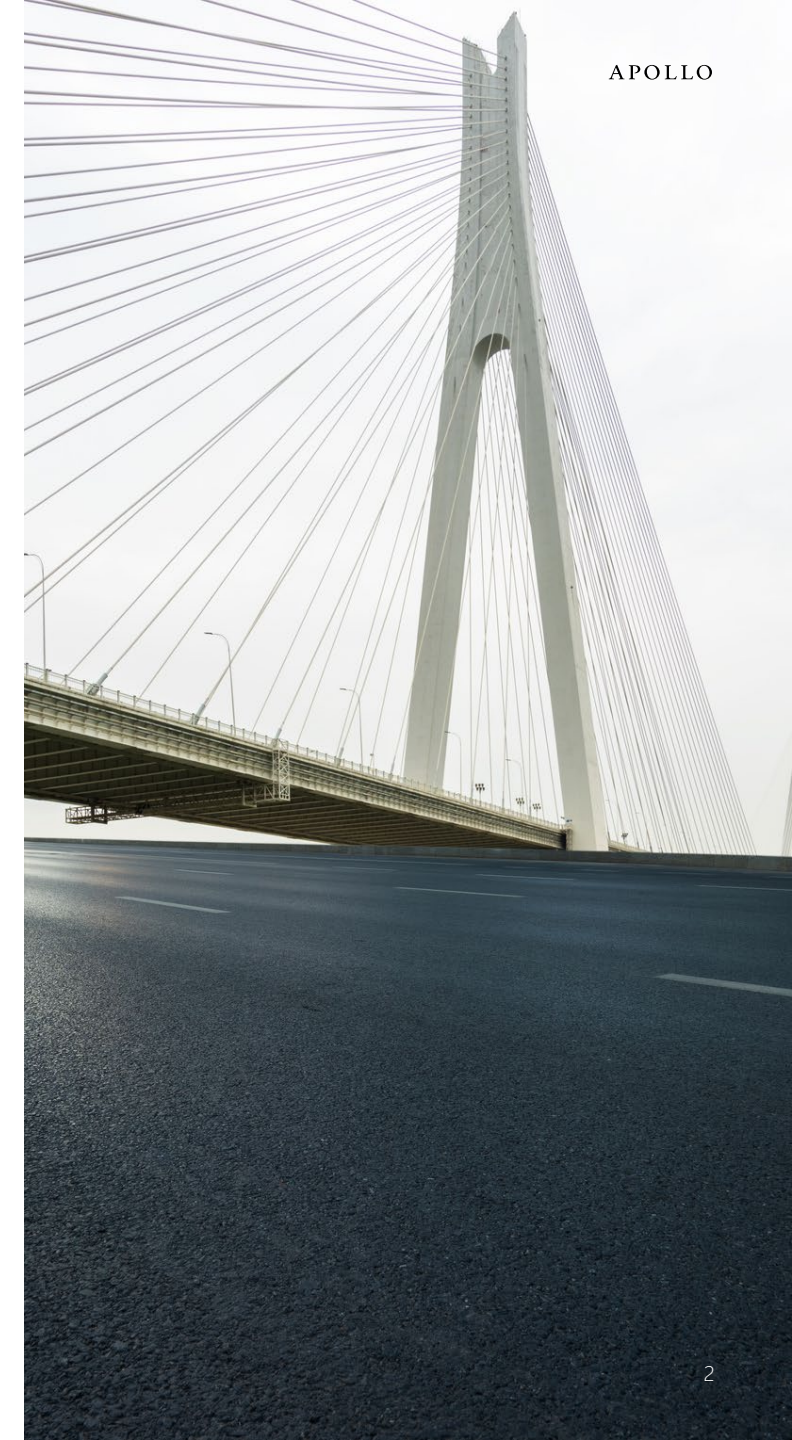
It should not be assumed that investments made in the future will be profitable or will equal the performance of the investments shown in this document.

Legal Disclaimer

Unless otherwise noted, information included herein is presented as of the dates indicated. Apollo Global Management, Inc. (together with its subsidiaries, "Apollo") makes no representation or warranty, expressed or implied, with respect to the accuracy, reasonableness, or completeness of any of the information contained herein, including, but not limited to, information obtained from third parties. Opinions, estimates and projections constitute the current judgment of the author as of the date indicated. They do not necessarily reflect the views and opinions of Apollo and are subject to change at any time without notice. Apollo does not have any responsibility to update the information to account for such changes. Hyperlinks to third-party websites in these materials are provided for reader convenience only. There can be no assurance that any trends discussed herein will continue.

The information contained herein is not intended to provide, and should not be relied upon for, accounting, legal or tax advice and does not constitute an investment recommendation or investment advice. Investors should make an independent investigation of the information contained herein, including consulting their tax, legal, accounting or other advisors about such information. Apollo does not act for you and is not responsible for providing you with the protections afforded to its clients.

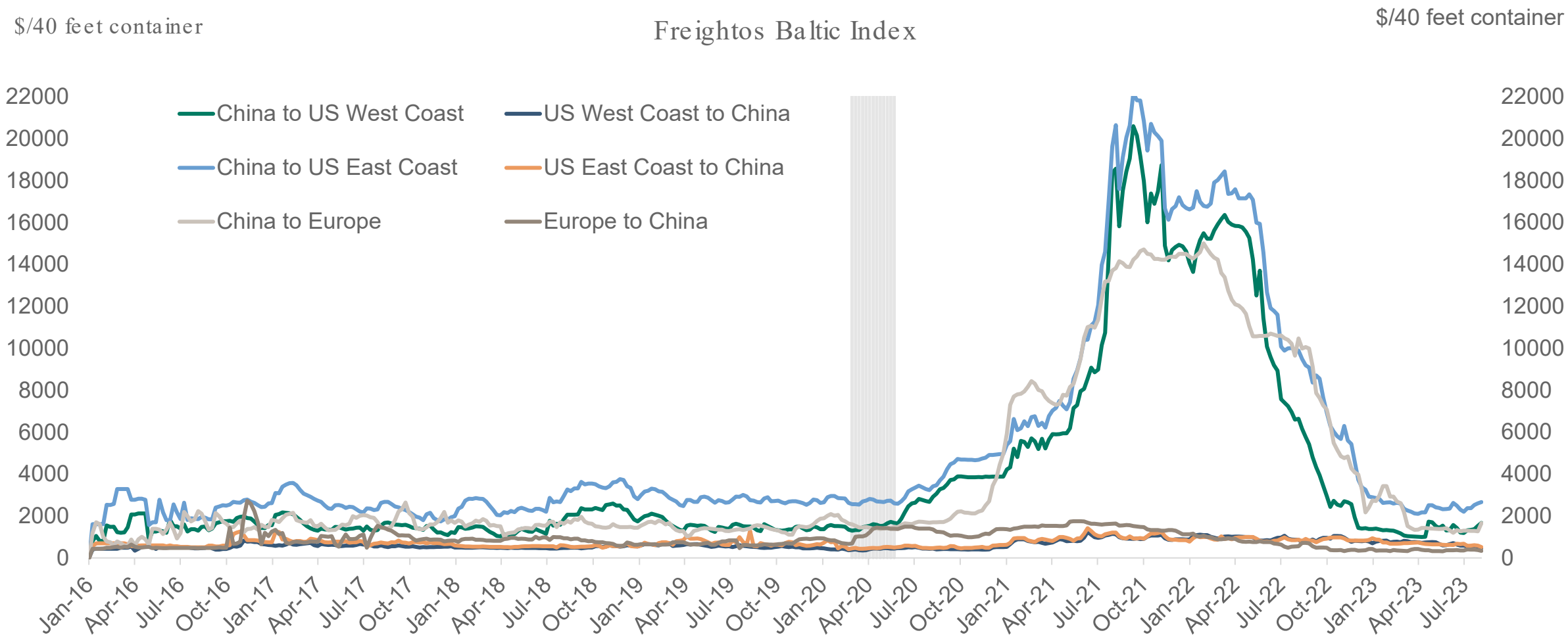
Certain information contained herein may be "forward-looking" in nature. Due to various risks and uncertainties, actual events or results may differ materially from those reflected or contemplated in such forward-looking information. As such, undue reliance should not be placed on such information. Forward-looking statements may be identified by the use of terminology including, but not limited to, "may", "will", "should", "expect", "anticipate", "target", "project", "estimate", "intend", "continue" or "believe" or the negatives thereof or other variations thereon or comparable terminology.



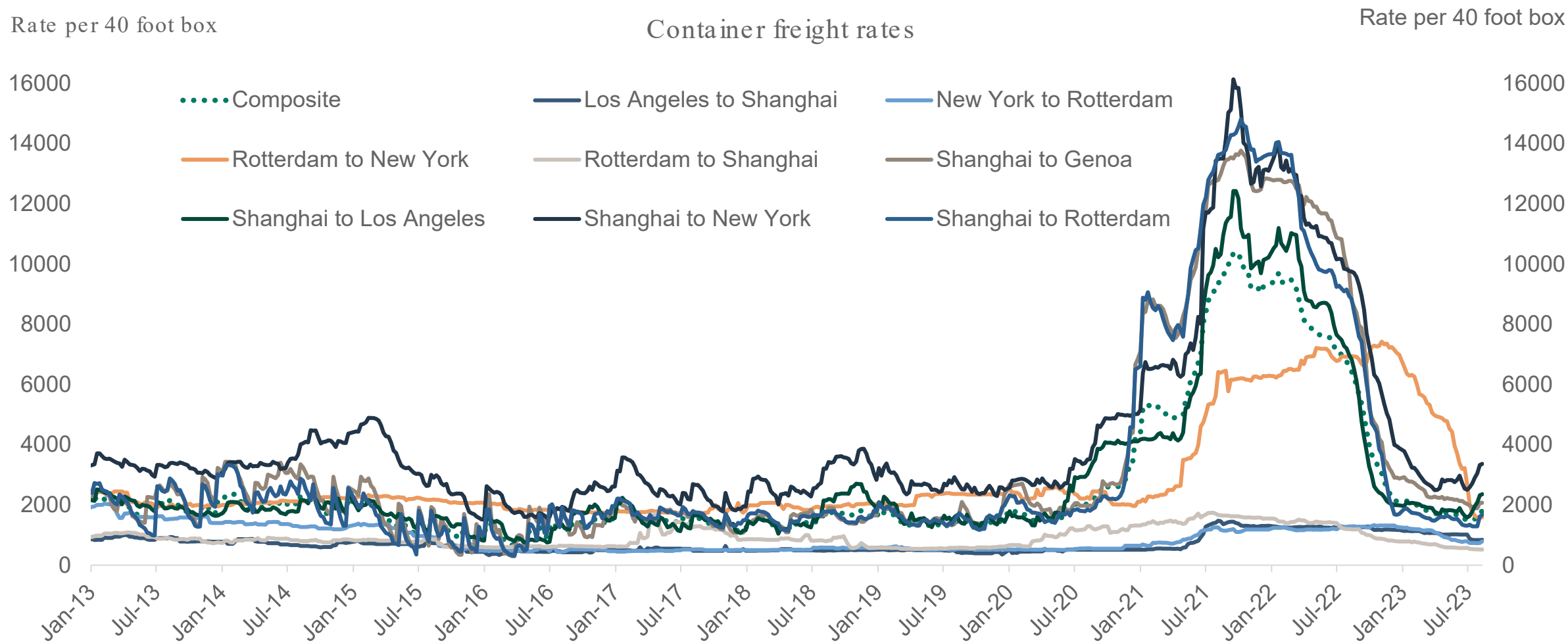
Overview: Key supply chain indicators back at 2019 levels



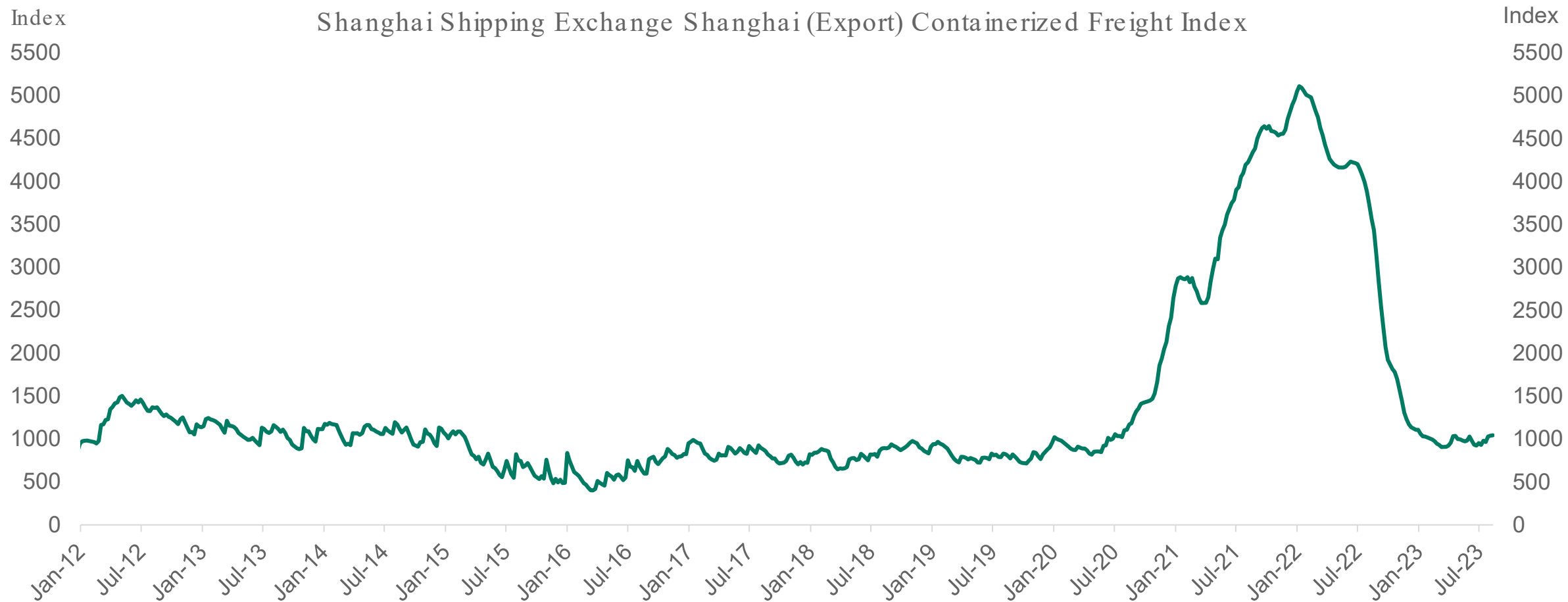
Price of transporting a container from China at pre-pandemic levels



Container freight rates from China to US have increased a bit in recent weeks

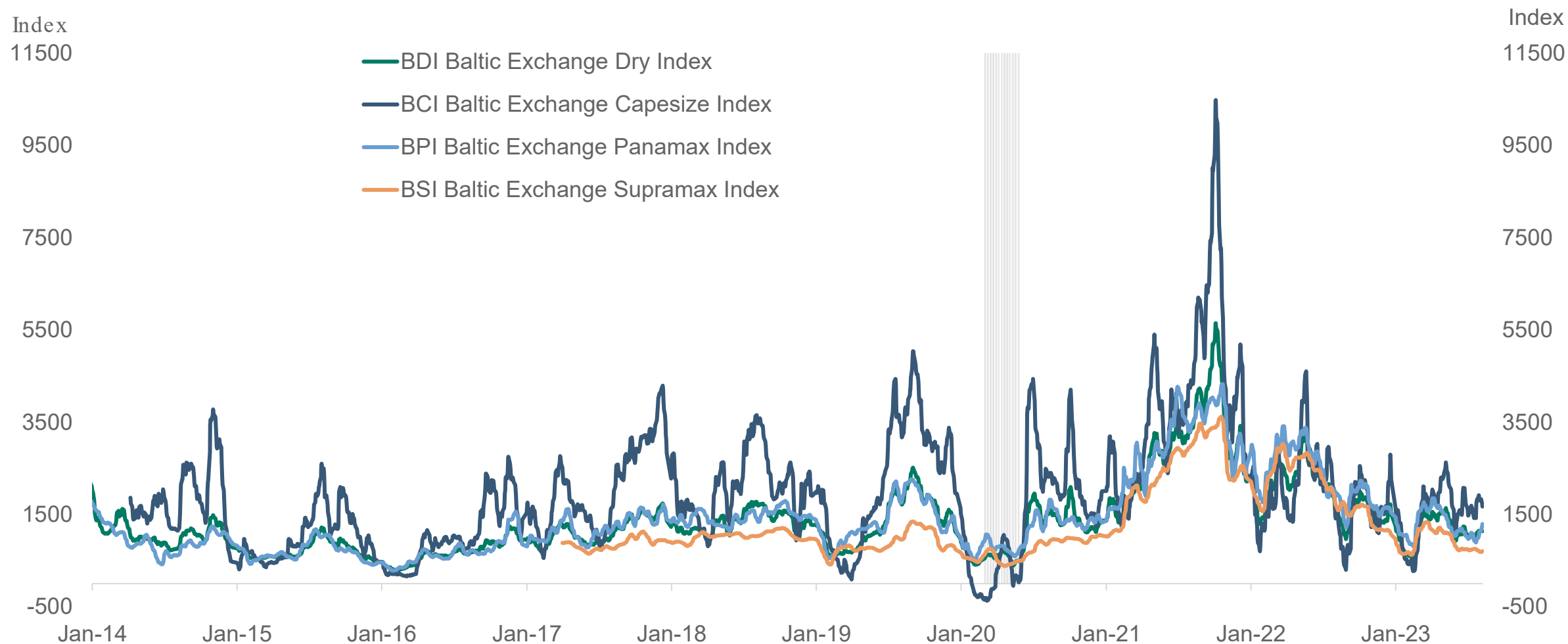


China: Transportation costs at 2019 levels

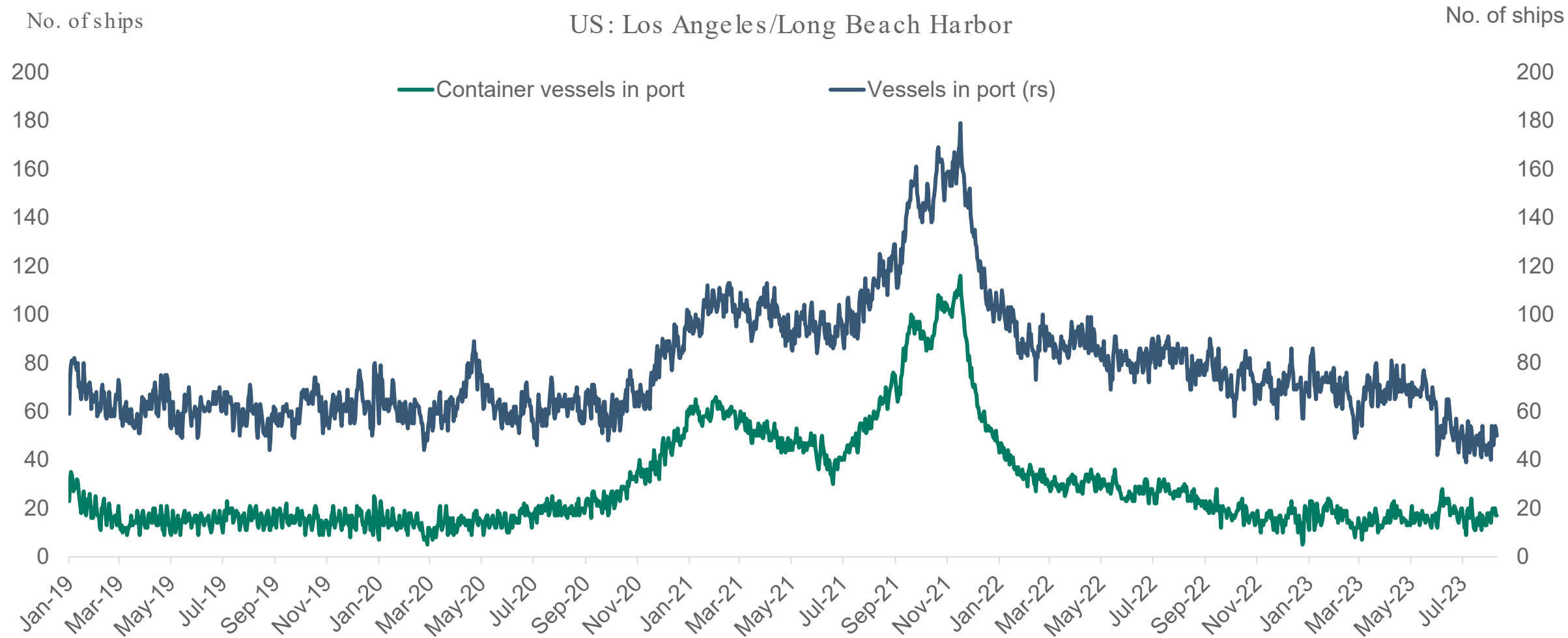


Source: Shanghai Shipping Exchange, Bloomberg, Apollo Chief Economist

Baltic Exchange indexes back at 2019 levels

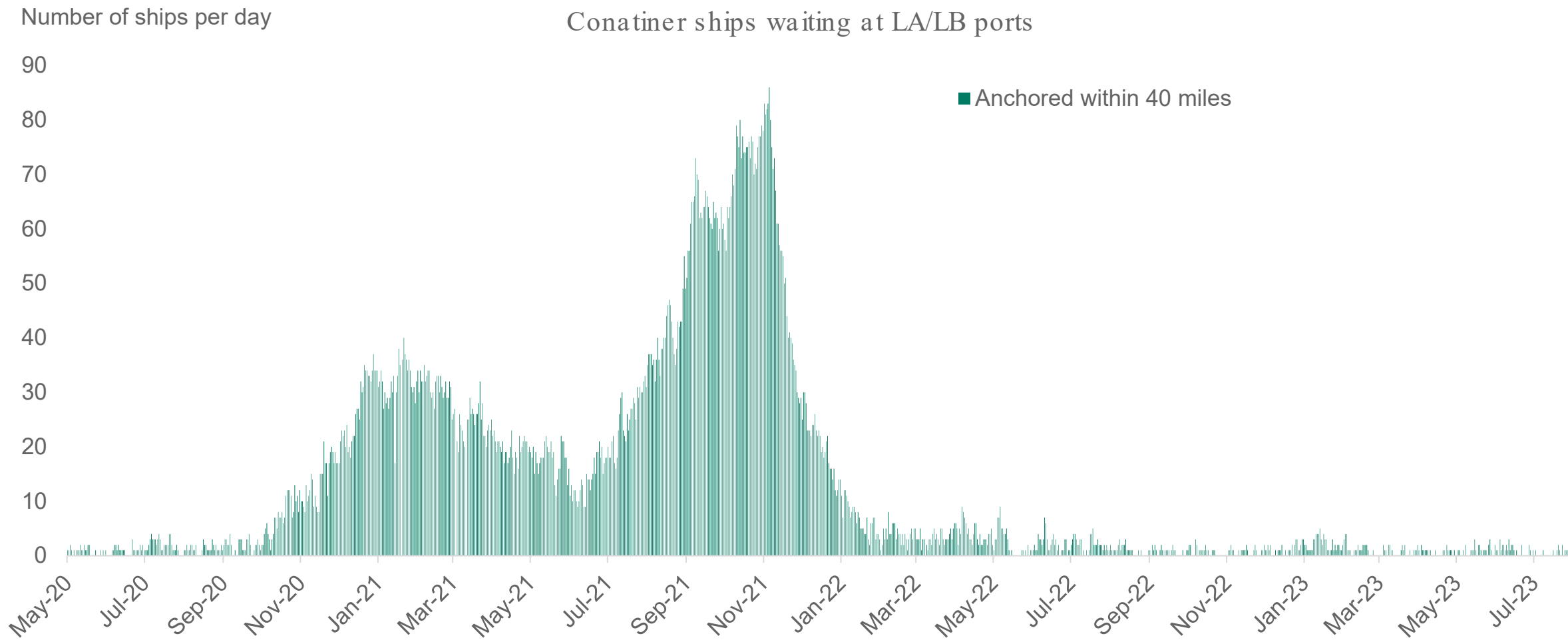


Vessels at LA/Long Beach Harbor



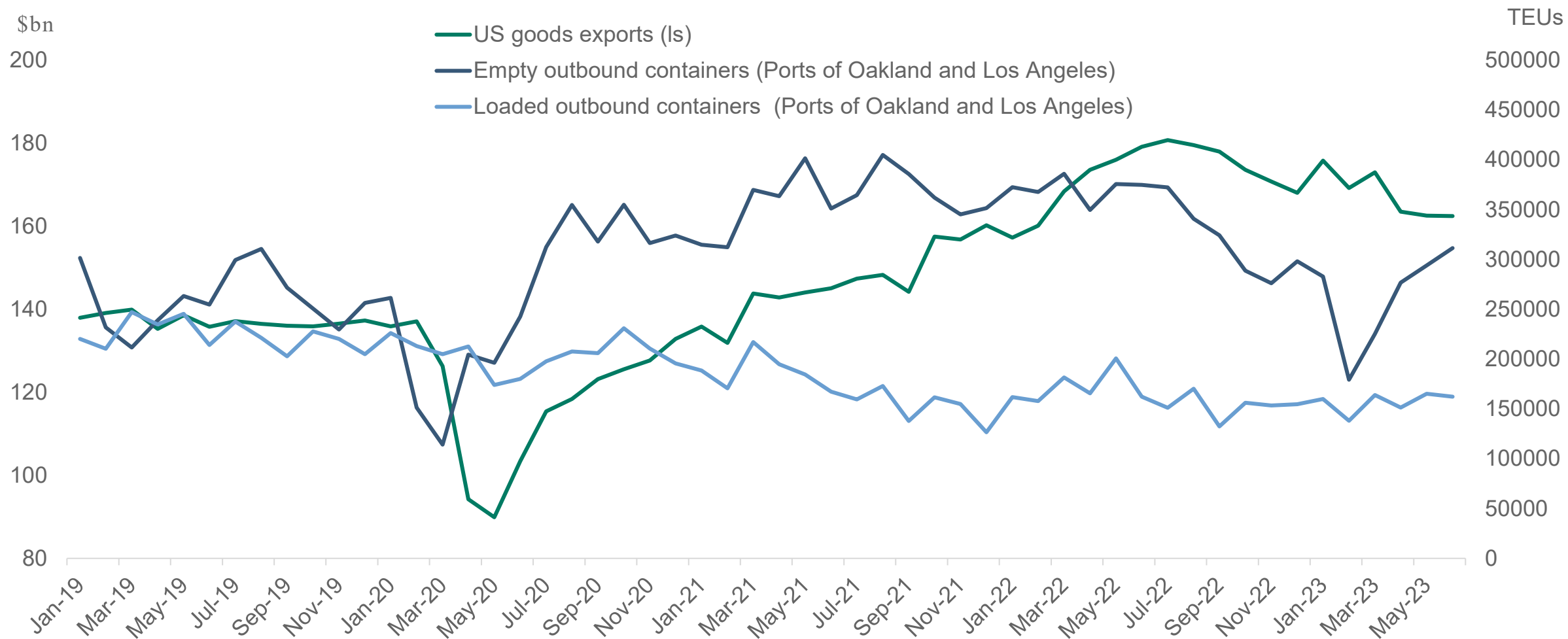
Source: The Marine Exchange of Los Angeles and Long Beach Harbors, Haver, Apollo Chief Economist

US: Los Angeles/Long Beach Harbor: Container Vessels in Port at Anchor



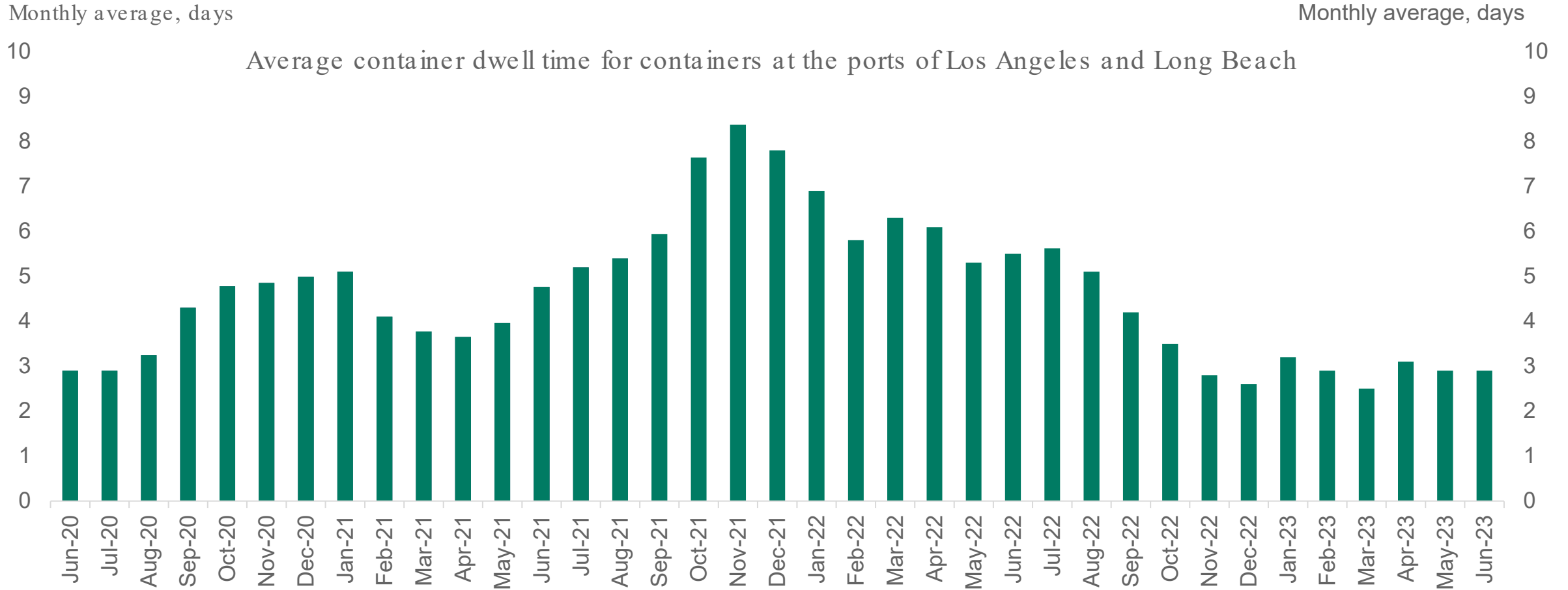
Source: Haver, Apollo Chief Economist

US goods exports: Everything looking normal

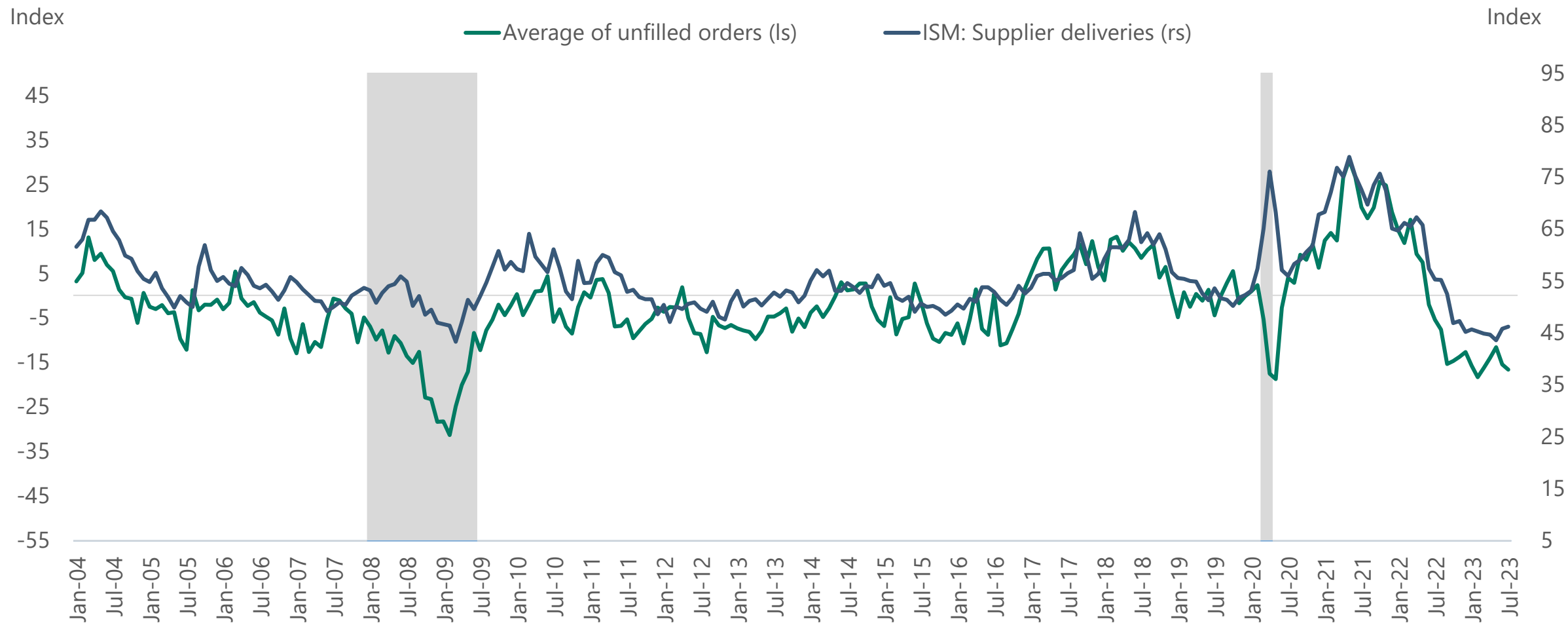


Source: Haver Analytics, Census, Ports of Oakland and Los Angeles, Apollo Chief Economist

Amount of time a container waits to get picked up at a marine terminal after being unloaded from a vessel

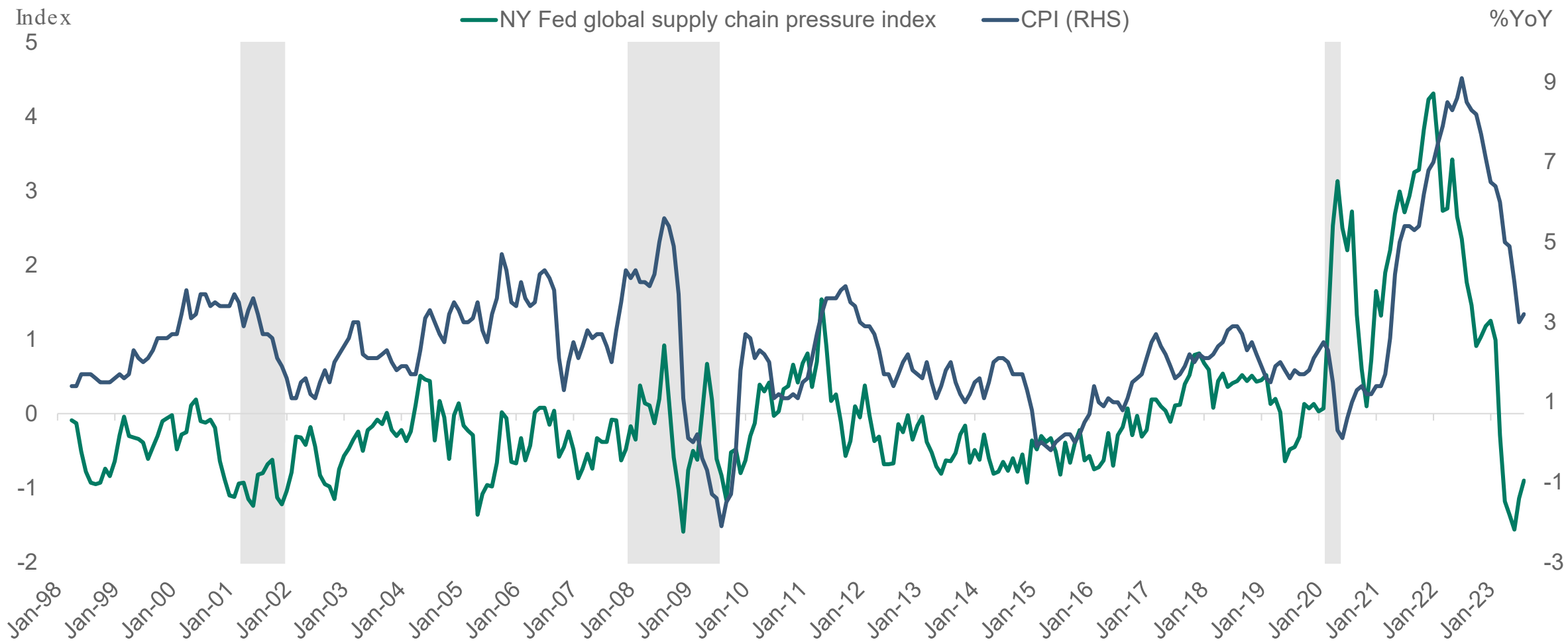


Supply chains are back to normal



Source: Haver, Apollo Chief Economist (Note: Average of unfilled orders is average of Richmond Fed Mfg Survey: Current Manufacturing Order Backlogs, Philly Fed Mfg Business Outlook: Current Unfilled Orders, Empire State Mfg Survey: Delivery Time)

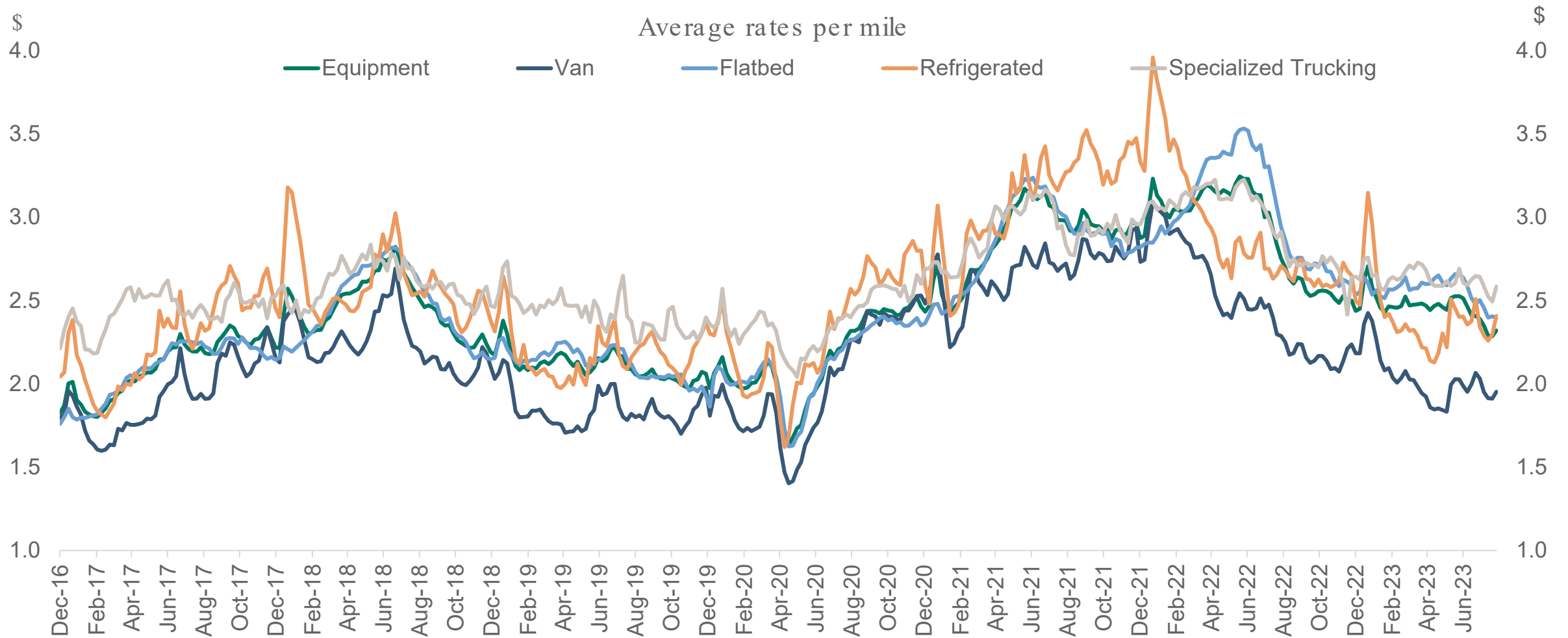
New York Fed supply chain index pointing to downward pressure on inflation



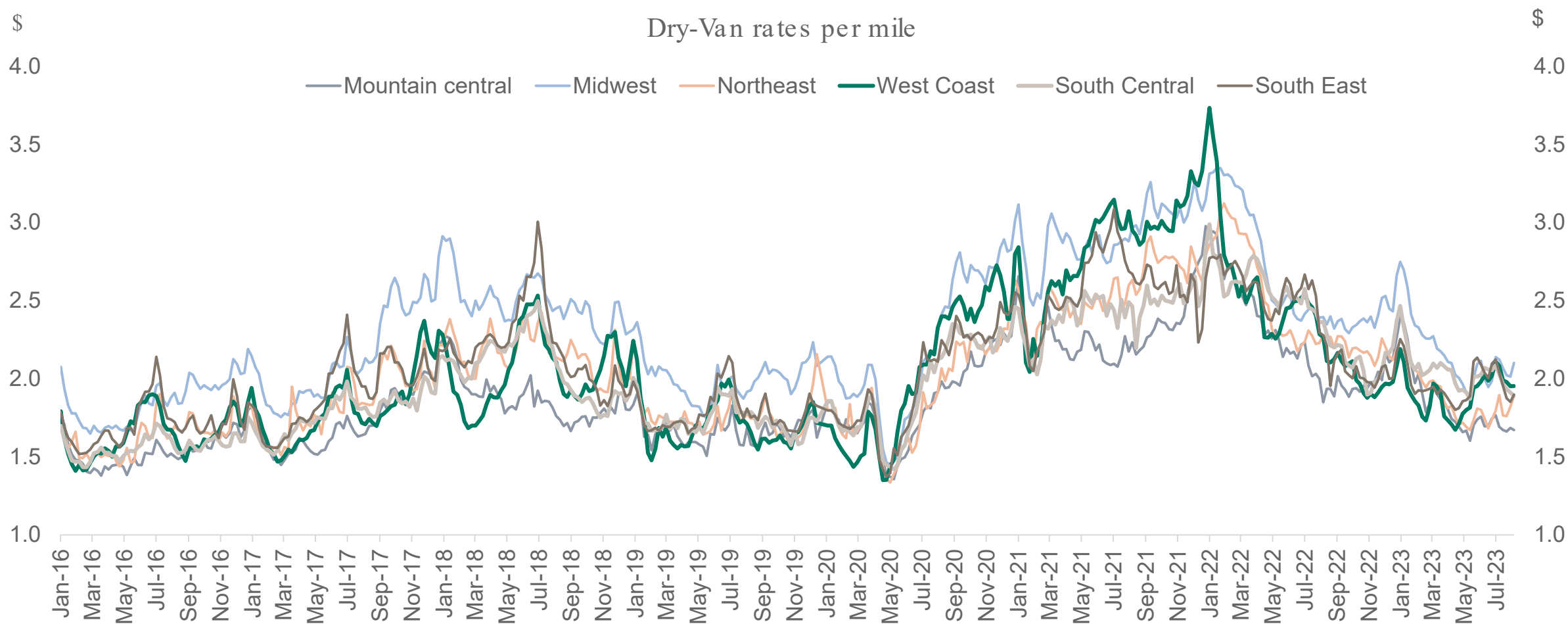
Costs of distribution and
logistics back at pre-
pandemic levels



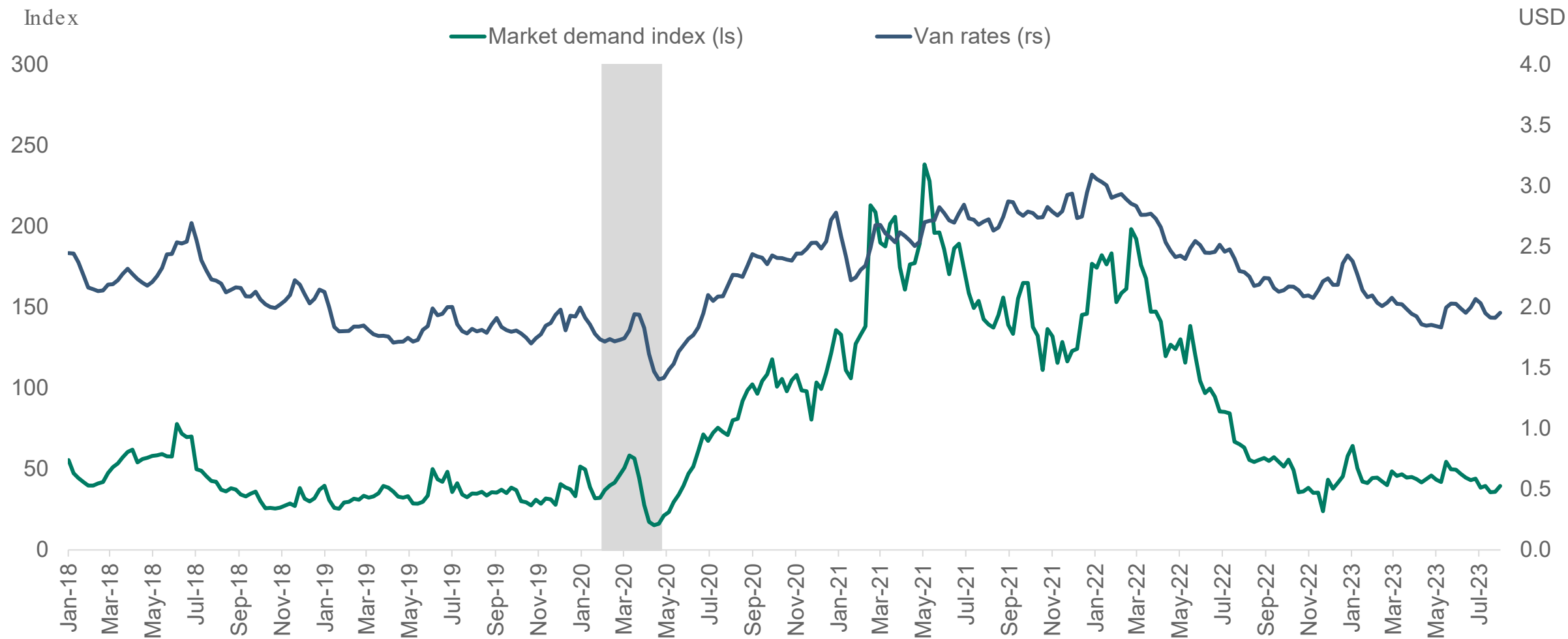
Truck transportation costs near 2019 levels



Dry van spot rates at 2019 levels

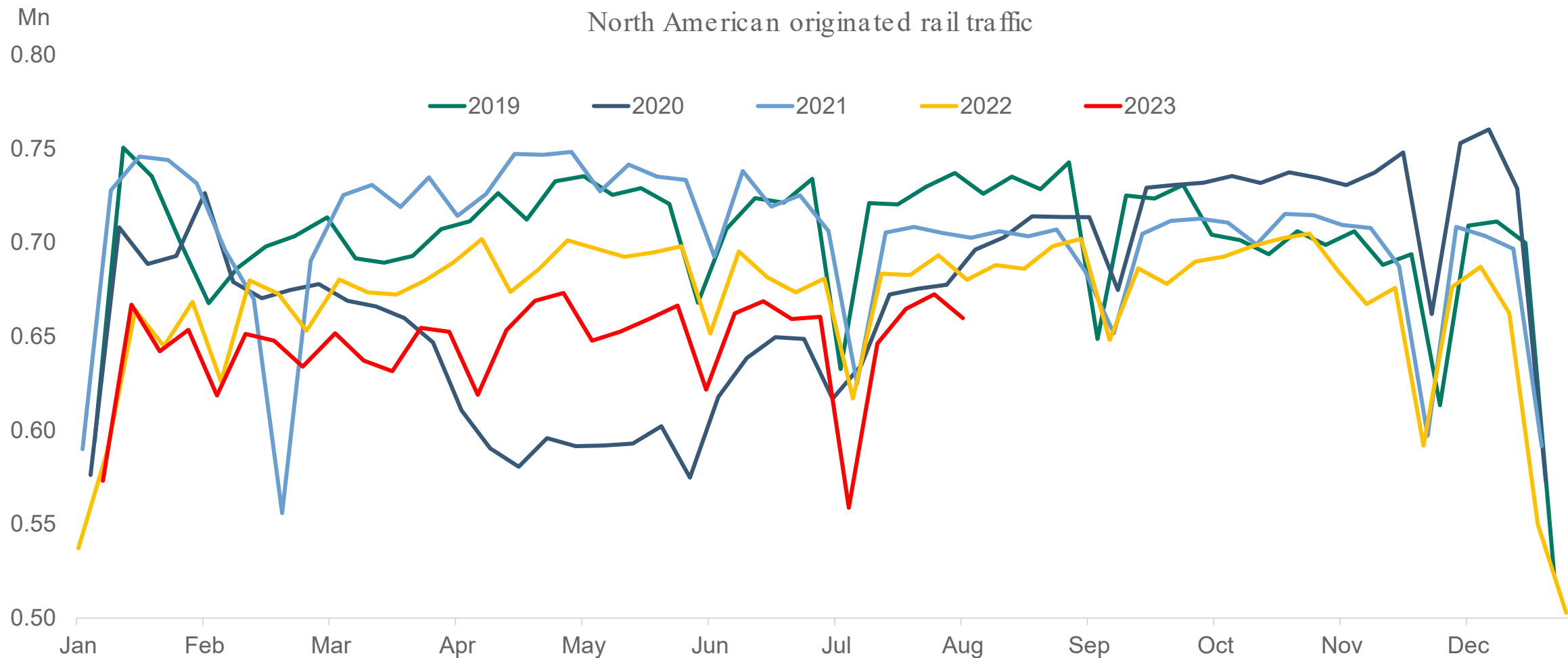


Demand for trucks correlated with van rates

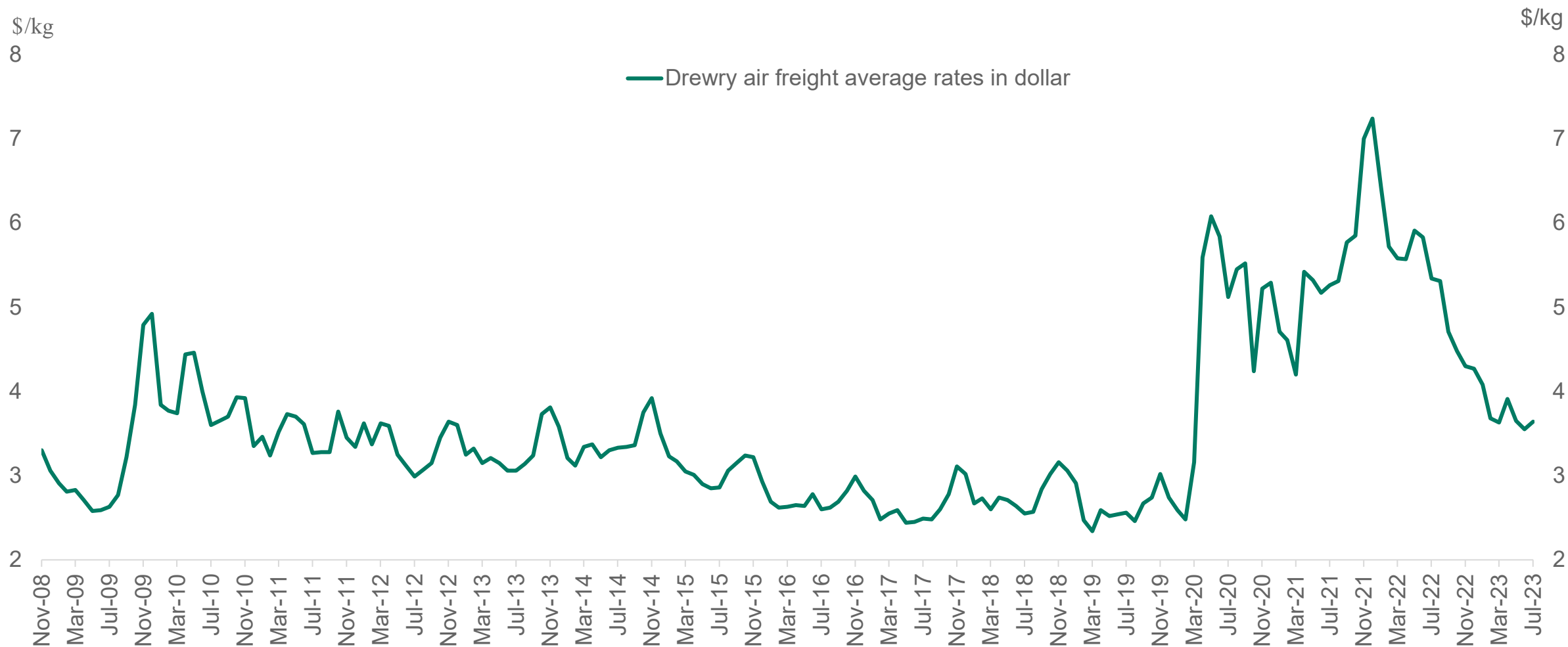


Source: Bloomberg, Apollo Chief Economist (Note: Market demand index is ratio of loads over trucks and measures the relative truck demand; Van rates are measured in USD)

Rail traffic volumes lower in 2023



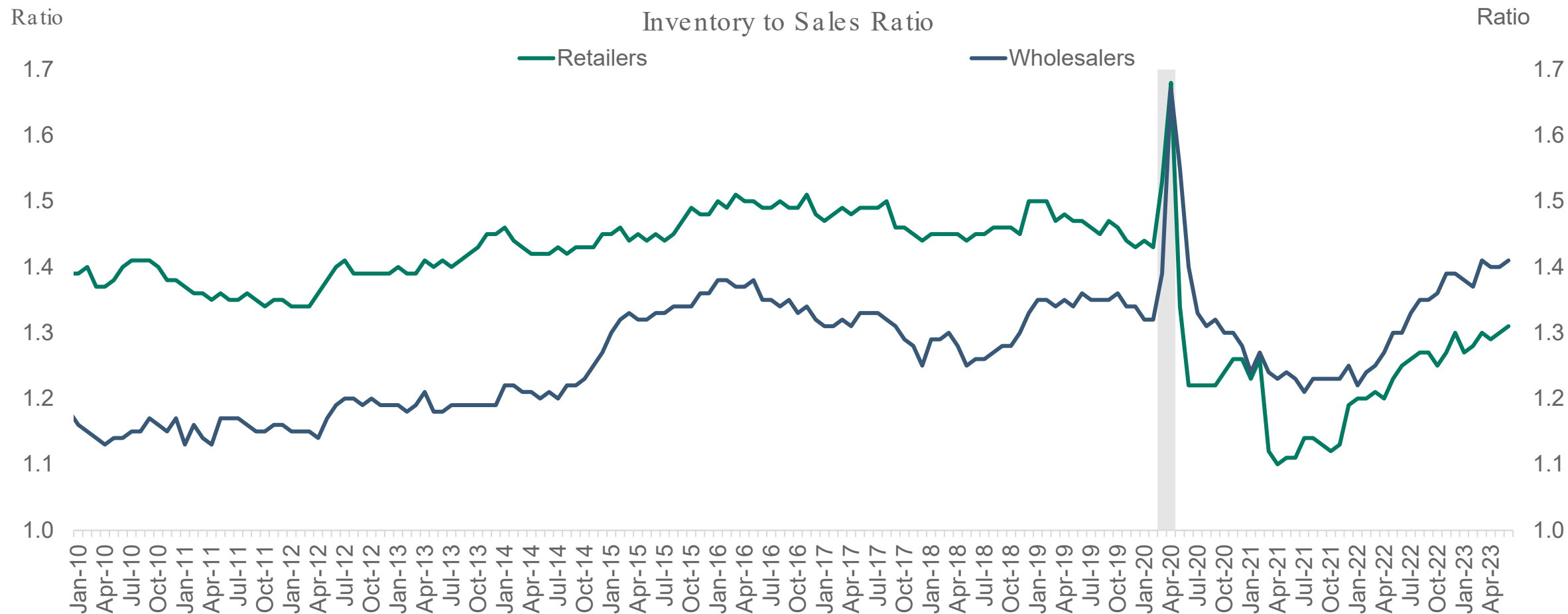
Air freight rates approaching pre-pandemic levels



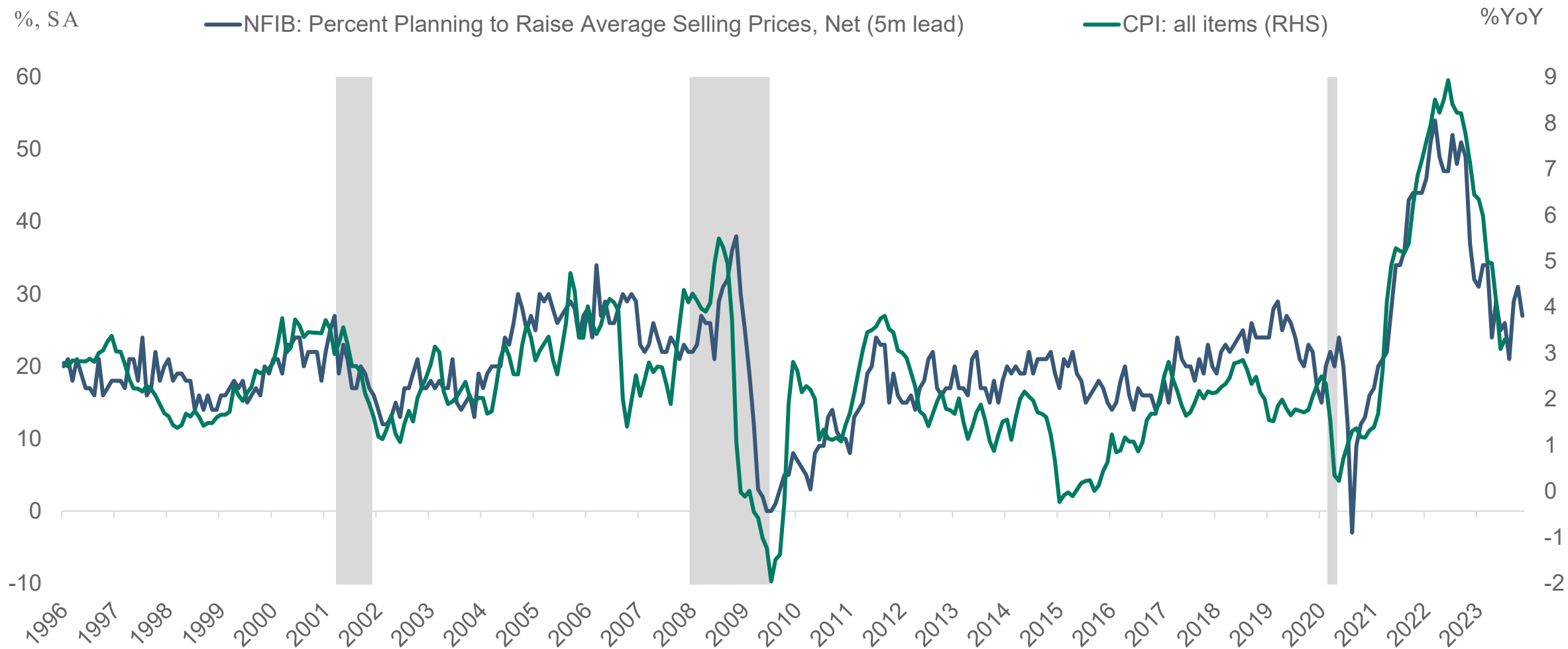
Inventory to sales ratio
normalizing



Inventory to sales ratio back at pre-pandemic levels



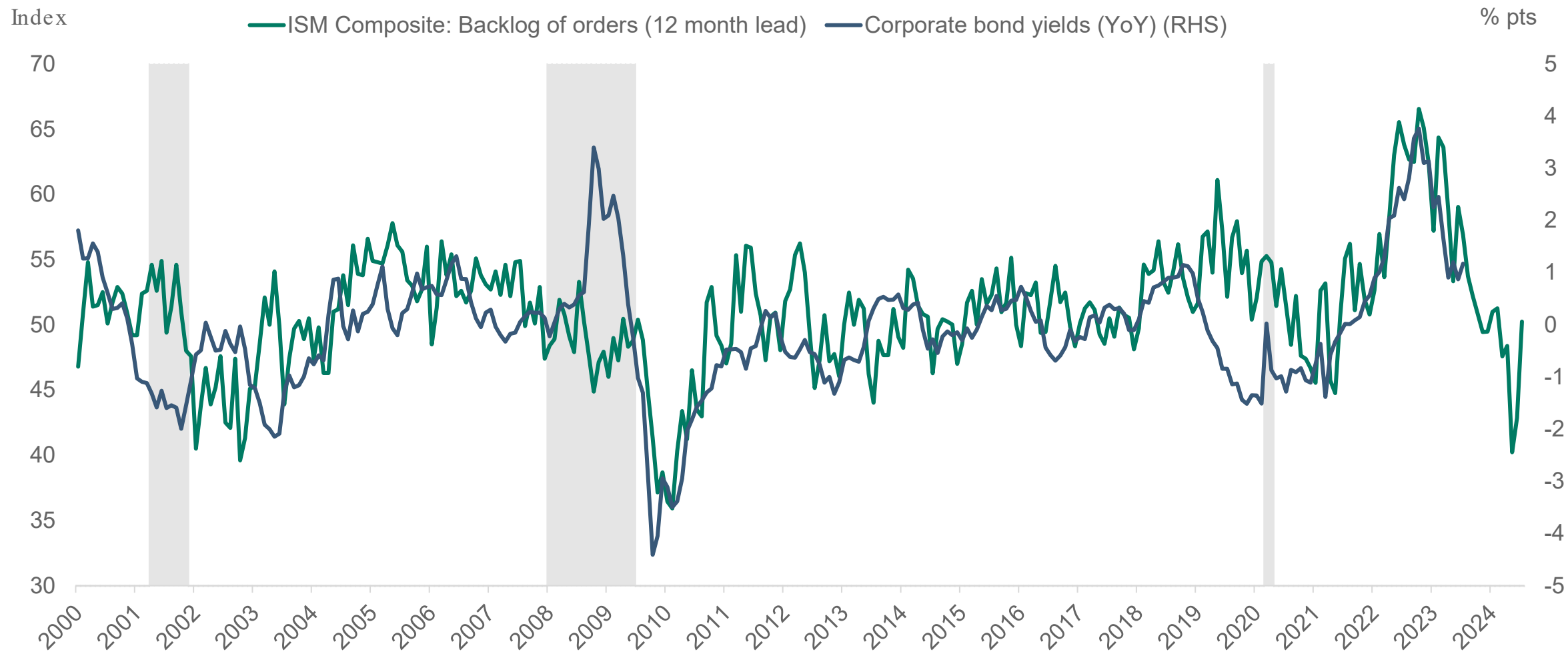
Inflation pressures are gradually easing



Inflation pressures are gradually easing



Supply chain bottlenecks correlated with corporate bond yields



Source: ISM, ICE BofA, Haver Analytics, Apollo Chief Economist. Note: ISM Composite Index is weighted average of services and manufacturing indices, with weight for services index 80% and manufacturing index 20%.



Torsten Slok, Ph.D.

Chief Economist

Apollo Global Management

tslok@apollo.com

Torsten Slok joined Apollo in August 2020 as Chief Economist and he leads Apollo's macroeconomic and market analysis across the platform.

Prior to joining, Mr. Slok worked for 15 years as Chief Economist at Deutsche Bank where his team was top ranked in the annual Institutional Investor survey for a decade, including #1 in 2019. Prior to joining Deutsche Bank Mr. Slok worked at the IMF in Washington, DC and at the OECD in Paris.

Mr. Slok has a Ph.D in Economics and has studied at the University of Copenhagen and Princeton University.